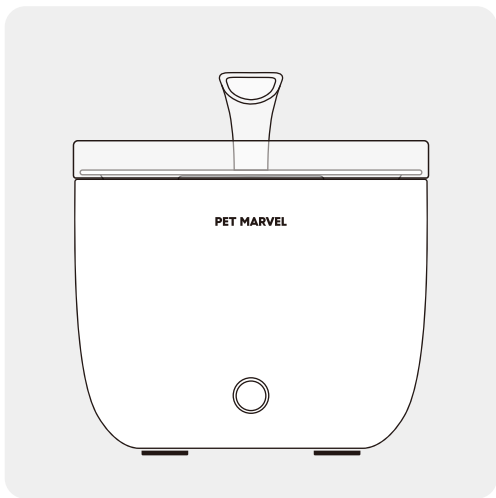




# PET MARVEL®



**Pet Smart Drinking Fountain Light - Youth Edition**

# 1 User Instructions

Dear valued customer, we sincerely appreciate your purchase of the Pet Marvel Pet Smart Water Dispenser Light - Youth Edition. Our mission is to create a delightful and harmonious life for both you and your beloved pets.

Before using this product, we kindly request you to carefully read and adhere to the following instructions provided in this manual. Your understanding and cooperation are highly valued, and we wish you a pleasurable experience with our product.

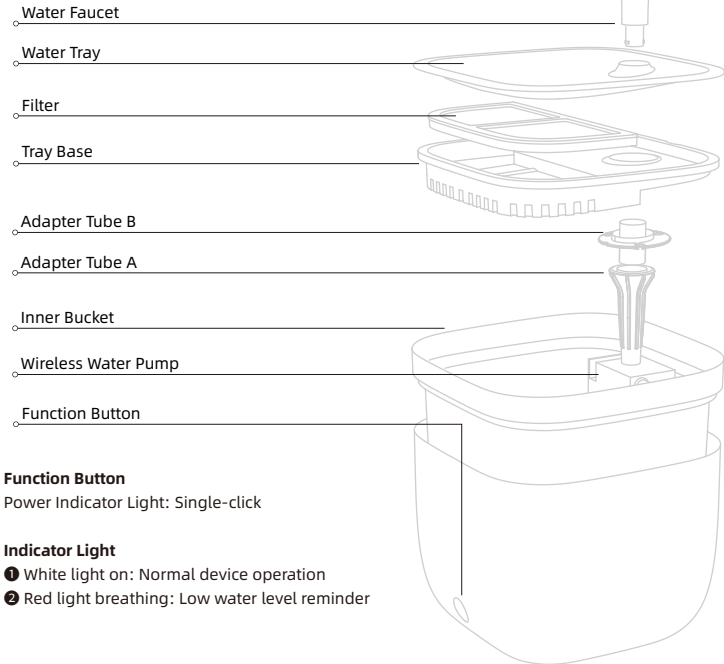
## **Warning:**

To prevent any potential hazards, please ensure that the data cable is securely hidden or stored to avoid the possibility of pets chewing on it, which could lead to electric shock or other dangerous situations.

## **Note:**

1. Prior to the initial use, thoroughly rinse and soak the filter with clean water. Please refrain from using hot water for this purpose.
2. To maintain optimum filtering performance, we recommend replacing the filter every 30 days and cleaning the water tank every 3 days. Additionally, it is advisable to periodically inspect and cleanse the water pump and sponge.
3. For safety reasons, it is imperative to conceal or store the power cord properly, as pets may chew on it, resulting in potential electric shock or other hazardous occurrences.
4. We strongly advise against exceeding the MAX line when filling the water reservoir.

## ② Product Information



### 3 Packing List

**Please note:**

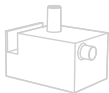
After opening the product packaging, kindly ensure that the product is in good condition and cross-reference with the following image to confirm that all accessories are complete. Additionally, we regularly upgrade our products, which may result in product adjustments. Please refer to the actual product for the most accurate information.



Water Dispenser Main Unit\*1



Filter\*1



Wireless Water Pump\*1



Water Faucet\*1



Adapter Tube\*1



Power Cord \*1

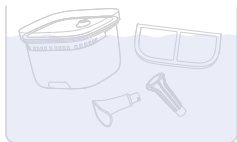


User Manual \*1

## 4 Instructions for Use

### Cleaning

Remove the device from the packaging and proceed to clean the inner bucket assembly. It is recommended to soak the filter for 2 minutes.

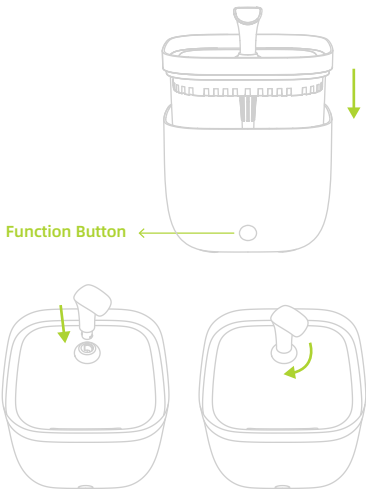


### Assembly/Water Filling

Following the provided diagram, assemble the wireless water pump and adapter tube into the inner bucket one by one. Pour clean drinking water into the inner bucket. Next, place the filter tray, filter, and stainless steel water tray in the sequence mentioned above.

(Note: Before inserting the filter, please rinse it under running water for 2 minutes to remove any loose charcoal, which can enhance the filtration effect.)

Finally, install the water faucet as shown in the diagram. Place the assembled inner bucket assembly into the outer unit and connect the power supply. The device is now ready for use.



## 5 Product Specification

Product Name: Pet Smart Drinking Fountain

Light - Youth Edition

Product Model: NFSWA25A

Product Colors: White, Green

Main Materials: ABS, PP, PC

Product Dimensions: 185\*185\*197mm

Product Capacity: 2L

Product Net Weight: 1kg

Product Gross Weight: 1.3kg

Rated Voltage: DC5V/1A

## ⑥ Warranty Card

Dear valued customer, thank you for purchasing this product. Before using it, please carefully read the following warranty terms:

- Within one year from the date of purchase (based on the valid purchase receipt), we offer free repairs for any quality issues with the product itself.
- The following situations are not covered by the warranty:
  - Malfunctions or defects caused by improper usage or environmental conditions.
  - Any malfunctions or defects resulting from improper installation, misuse, unauthorized repairs, force majeure events, or other external factors.
  - Any malfunctions or defects caused by the use of third-party accessories.
  - Products that have exceeded the warranty period.
  - Any malfunctions or damages resulting from issues unrelated to the product's design, technology, manufacturing, or quality.
  - Normal fading, wear, or consumption during the product's use, which are not considered warranty-related issues.
  - Inability to provide a valid purchase receipt.
- Please promptly communicate with our after-sales customer service to confirm if you are eligible for free warranty service.
- If the returned product does not meet the valid warranty terms, we will charge corresponding repair fees.
- When sending the product back for repair, please fill out the after-sales information feedback form and include it with the shipment.

### After-Sales Feedback Form

Customer Name	Product Model
Your Phone Number	Date Of Purchase
Your E-Mail	Where You Purchase (Channel & Shop)
Your Address	Fault Feedback (Code & Name)

Note: The images are for reference only; the actual product may vary.